



BANYAN TREE SCHOOL

IN PURSUIT OF EXCELLENCE



WHO WE ARE



Banyan Tree School, Delhi, has expanded its reach since its establishment in 1986, continually enhancing its liberal education approach. From the beginning, we aimed to create a nurturing environment where students could develop academically, emotionally, and socially.

At Banyan Tree School, education is about profound, engaging learning with meaningful purpose, motivating and inspiring students to uncover their true potential and address real-world issues, guided by the fundamental principles of our comprehensive development framework.

Over the years, we have embraced both traditional values and modern teaching methods to ensure our students receive a balanced education. Our dedicated teachers are not only educators but also mentors who inspire students to explore their potential and pursue their interests. We stress the importance of critical thinking, creativity, and teamwork, preparing students to confidently tackle the challenges of the modern world.

Our school has continuously updated its facilities and teaching techniques to make learning engaging and effective. We offer a diverse curriculum that addresses the varied interests and goals of our students, fostering an inclusive and supportive community.

Extracurricular activities, including sports, arts, and community service, have always been a key part of our educational approach. These activities help in the holistic development of our students, making them well-rounded individuals.

Here every child confidently feels – Banyan tree is a place where I can be 'me'

Our students who have graduated from school have created pathways for successful choices of colleges and careers in India and abroad. Banyan tree School is being recognized and acknowledged for its thoughtful learning environment.

Banyan tree is affiliated with CBSE with diverse students and competent teachers.

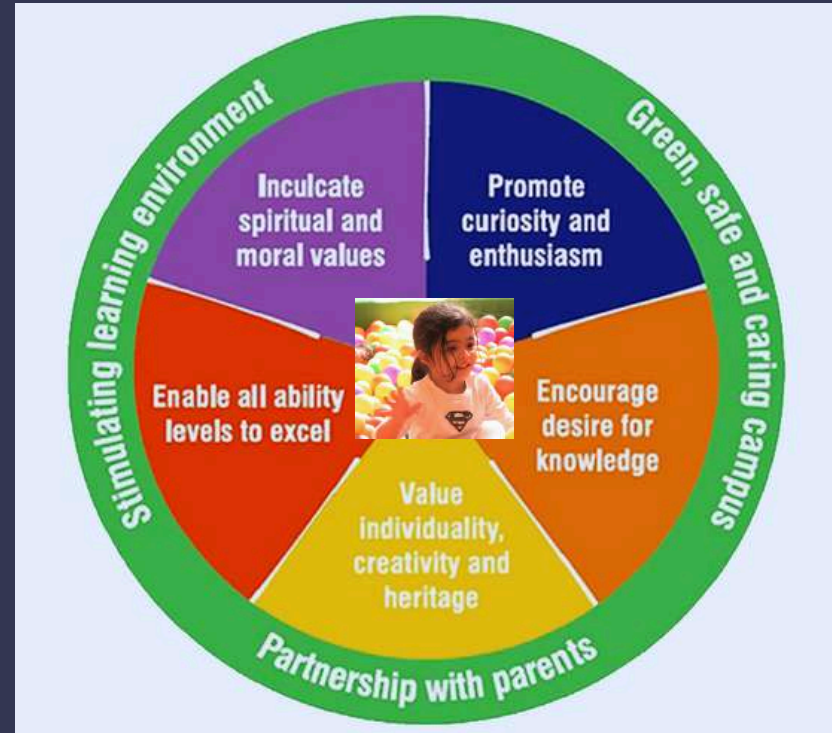
FROM THE PRINCIPAL'S DESK



Welcome to Banyan Tree School, Lodhi Road, New Delhi, where we believe in nurturing not just minds, but hearts too. Our warm, caring environment ensures that every student feels valued and supported, fostering internal motivation, lifelong learning, and balanced development. We are committed to offering high-quality education that equips students with the skills they need to succeed in today's world. Our curriculum is designed to foster analytical thinking, creativity, and problem-solving skills, preparing students to become well-rounded contributors to society. Our dedicated teachers work tirelessly to help students grow into compassionate and responsible individuals, providing scaffolding and guidance tailored to their needs. We take pride in creating a safe space where every child can flourish and become their best selves. Join us in our mission to cultivate good human beings who will make a positive impact on the world, as we balance quality education and skill development to build a brighter future together.

RINA BANA, PRINCIPAL

OUR VISION



We will provide, in partnership with the parents, a stimulating learning environment in which every child is cared for and valued for their individuality, creativity and heritage. Within a green, safe and caring campus we will ensure that students of all ability levels are able to excel.

We will encourage each student to achieve his or her full potential by promoting curiosity and enthusiasm and equip them for the demands and opportunities of the future.

We will make every effort to ensure that our children leave school with:

- A set of spiritual and moral values — honesty, integrity and good judgment.
- An enquiring and discriminating mind and a desire for knowledge.
- Strong self-esteem and high personal expectation.
- Independence and confidence.
- Tolerance and respect for others.

We believe that every child is entitled to enjoy his/her childhood. We want our children to take with them happy memories of their years with us.

EXPLORING EDUCATIONAL INITIATIVES

Learning through personalized education, inclusivity, and innovative teaching methods.



LEARNING MODEL

Learning that fosters

ACCURACY → SPEED → COMPETENCY

From her first day in kindergarten to her current position in class 10, she has blossomed into a confident young woman.

The school's nurturing environment, combined with its emphasis on holistic education, has played a pivotal role in her growth. We are immensely grateful to Banyan Tree School.

**TARA CHAKRABORTY, PARENT OF
SHRADDHA CHAKRABORTY,
X B**

Holistic Education

Emotional well-being

Social development

Life skills and resilience

Adaptive learning

Environmental Consciousness

Cultural Appreciation

Inclusive and Equitable Education

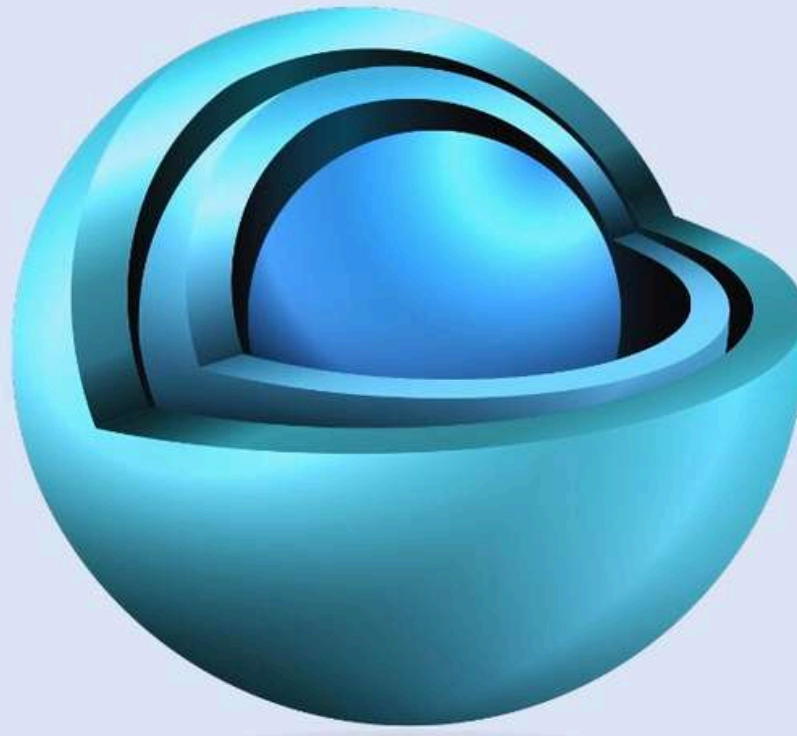
Social Collaborative

Empathy and mindfulness

Persuasive communicator

Respectful collaborator

Craftsmanship and excellence



Experiential Learning

Critical and deep thinker

Creative

Inquisitive

Knowledgeable

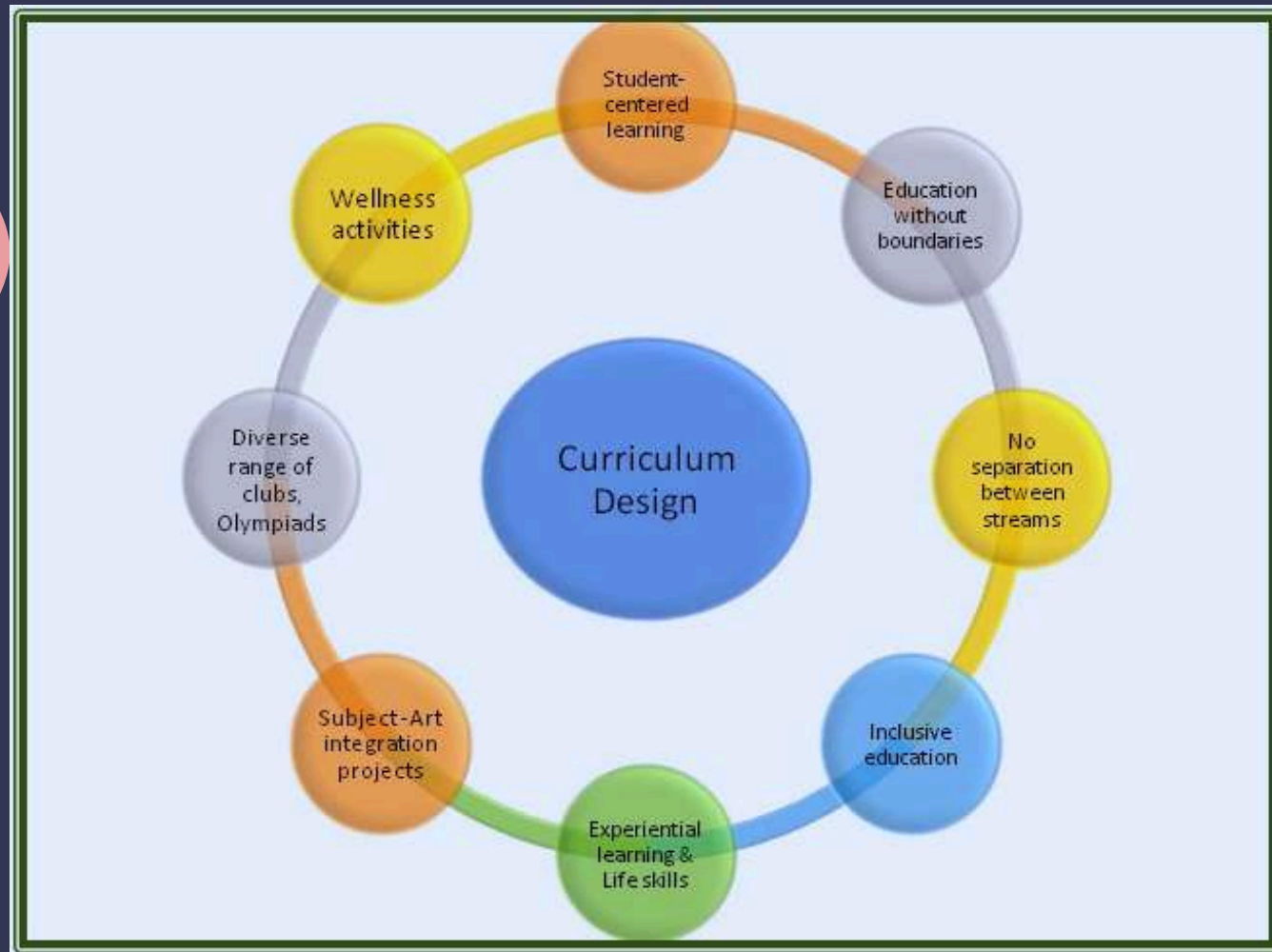
It is an enriching experience to be a part of Banyan Tree School. It's a wonderful place where I can help students learn and grow into good human beings.

**RISHI VANDANA, PGT
CHEMISTRY**

CURRICULUM DESIGN

Enrolling my child at Banyan Tree School has been one of the best decisions I have made as a parent. The supportive environment, dedicated faculty, and comprehensive curriculum have exceeded my expectations. The school's commitment to nurturing each student's individual potential is evident in my child's academic and personal growth. The emphasis on holistic development, incorporating extracurricular activities and character-building programs, has made a positive impact on my child's overall development.

FAUZIA KHAN,
PARENT OF RIDA FATIMA, X B



Our curriculum is designed to be student-centered, emphasizing overall development through wellness activities and a diverse range of clubs. We integrate art with subjects, promote experiential learning and life skills, and ensure inclusive education. Aligned with NEP 2020, our approach fosters a more comprehensive and interconnected learning experience.

CREATING FUTURE LEADERS

Nurturing inquisitive minds, fostering creativity, and instilling ethical values to drive exceptional achievements and impactful global contributions.



INNOVATIVE TEACHING APPROACHES

Using differentiated instructions for students to cater to their diverse learning preferences.



Experiential Learning

Hands-on experiences

We believe that firsthand experience deepens students' understanding and cultivates essential skills for success in an evolving world, preparing them for academia and beyond.

Project-Based Learning

Real-world scenarios

We use project-based learning to link classroom with real-world applications. This approach challenges students to apply their knowledge and skills to solve real problems, fostering deeper understanding and practical competence.

Technology Integration

Harnessing technology

We integrate technology in line with NEP 2020 to develop digital proficiency and encourage innovative problem-solving. Embracing technology in the classroom empowers students to navigate a changing digital landscape.

LEARNING ENVIRONMENT

Innovative strategies for improving student engagement and fostering critical thinking skills.



NURTURING EACH CHILD



We believe in the unique potential of every child. Our nurturing approach focuses on providing individualized attention and support to help each student thrive. Our dedicated educators create a warm, inclusive environment where students feel valued and encouraged to explore their interests and talents. Through a balanced mix of academics, extracurricular activities, and personal development programs, we ensure that every child receives a holistic education that fosters their intellectual, emotional, and social growth. At Banyan Tree School, we are committed to helping each student develop the confidence and skills needed to succeed in an ever-changing world.

The amazing environment at Banyan Tree School is beyond words. I feel lucky to be a part of Banyan Tree. The teachers are not only knowledgeable but the school offers a wide range of extracurricular activities, allowing students to pursue their skills.

I am proud to be a Banyanite!

RINAAD AHTSHAM, X B

CHARACTER BUILDING



Character building is integral to our well-rounded development approach. The school fosters values like integrity, empathy, and responsibility through interactive teaching, co-curricular activities, and community service. Leadership programs and teamwork activities build self-confidence and cooperation, while workshops on moral issues enhance critical thinking. Emphasizing mindfulness and well-being, the school ensures students manage stress effectively. This integration of character building with well-rounded education prepares students for future challenges with resilience and a strong moral foundation.

SET OUT ON A PATH THAT EQUIPS FOR BOTH LIFE AND EDUCATION



Being named the Commerce Topper in Class XII is a surreal feeling, filled with gratitude and excitement. I could only achieve this because of the invaluable support and guidance provided by the school, which has prepared me for life beyond academics, skills that I know will come in handy in the future.

KANISHKA SAINI, XII A (2023-24)

Embark on a journey that prepares you for academic success and life beyond the classroom. At Banyan Tree School, we provide endless opportunities to explore, engage, learn, and excel in academics while nurturing talent. Our balanced education fosters intellectual growth, emotional resilience, and essential life skills, equipping students for success in all aspects of their lives. Glad to be part of the Banyan Tree School family!

PARUL SAHAI, PGT HISTORY

I am deeply grateful to the teachers and staff at Banyan Tree School for their exceptional support and dedication in nurturing my child. They have created a wonderfully healthy environment that fosters education, creativity, and crucial life skills. Thank you, Banyan Tree School!

**DR. NAHEED NIAZI,
PARENT OF UFAQ AHMED, X B**

Embark on a journey that prepares you for both academic success and life beyond the classroom. Our school provides a balanced education that fosters intellectual growth, emotional resilience, and essential life skills. We aim to equip students with the tools they need to thrive in all aspects of their lives.

GRADES XI AND XII STREAMS OFFERED

Science
Commerce
Humanities

SUBJECT OPTIONS

Physics
Chemistry
Mathematics
Computer Science
Accounts
Economics
Business Studies
Entrepreneurship
Political Science
History
Sociology
Psychology



BRINGING REAL-LIFE EXPERIENCES INTO THE CLASSROOM

"Education is the most powerful weapon which you can use to change the world."

-Nelson Mandela

Mandela's words underscore the transformative potential of education, aligning with our school's mission to create an enriching learning environment that nurtures individuality, creativity, and heritage.

At Banyan Tree School, our vision is to equip students not only with academic knowledge but also with moral values, curiosity, enthusiasm, and skills essential for impactful global citizenship. Our emphasis on parental partnership and a secure, caring campus reflects Mandela's belief in education's power to drive societal change and progress.

By fostering students' concept development and promoting virtues like honesty, integrity, and sound judgment, our school ensures they are prepared to make positive contributions to society, embodying Mandela's vision of transformative education.



INCLUDING EXPERIENCES FROM EVERYDAY SITUATIONS IN THE CLASSROOM

"Live as if you were to die tomorrow. Learn as if you were to live forever."

-Mahatma Gandhi



Gandhi's emphasis on lifelong learning and continuous curiosity resonates with our school's goal of promoting enthusiasm and preparing students for future challenges and opportunities.

The vision of Banyan Tree School is to create a dynamic learning environment where students are valued for their uniqueness and creativity, aligning with Gandhi's emphasis on learning with urgency and dedication.

By nurturing an inquisitive mindset and a thirst for knowledge, the school inspires students to embrace learning as an ongoing journey, reflecting Gandhi's philosophy.

PHYSICAL EDUCATION

Our physical education program is meticulously crafted to prioritize movement and physical development. Through targeted exercises, we aim to enhance not only their balance, coordination, and spatial awareness but also their endurance, flexibility, and strength. We focus on developing gross motor skills such as throwing, striking, and catching, which lay the foundation for more complex movements.



SPORTS

Football



Volleyball



Lawn Tennis



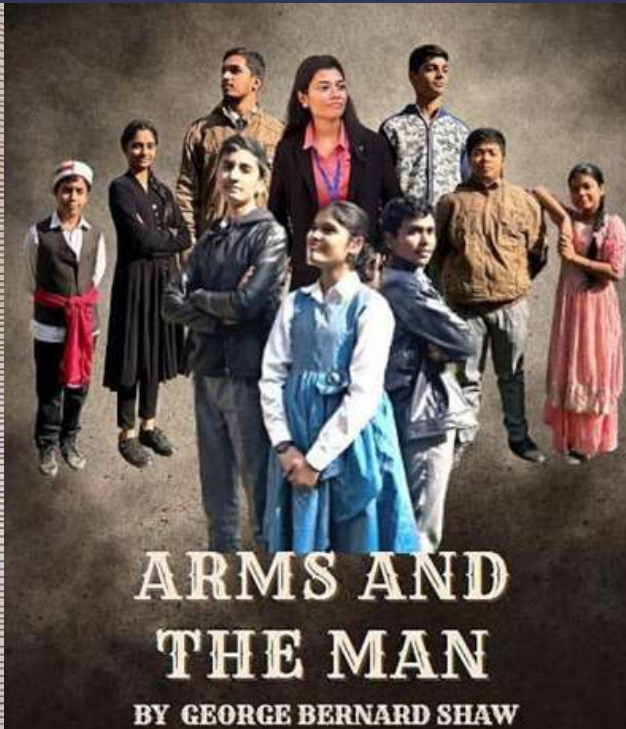
Gymnastics



THE ARTS



ot on OnePlus
ered by Tanya Damada



**ARMS AND
THE MAN**
BY GEORGE BERNARD SHAW

We encourage our younger children to freely explore their imaginations, fostering creativity through expressive and performing arts. Over time, we integrate art into their education, to create an interdisciplinary approach.

I have been nurtured by a community that feels like family. The school's exceptional infrastructure, including the science and computer labs, a comprehensive library, spacious classrooms, and vibrant performing arts facilities, has helped me grow.

SHRADDHA CHAKROBORTY, X B



I feel privileged to be an integral part of Banyan Tree School. The level of care and trust that the administration has in their teachers is unique and special. Every day, I learn new and innovative ways of teaching. I encourage them to engage in art and link it to subjects.

**SEEMA RAINA, MOTHER
TEACHER, GRADE III**

Multimedia Room : Enhanced Learning Experience



We encourage our younger children to freely explore their imaginations, fostering creativity through expressive and performing arts. Over time, we integrate art into their education, to create an interdisciplinary approach.

With tools like interactive whiteboards, educational software, and online learning platforms, students can explore subjects in new, exciting ways. Perfect for group projects, creative expression, and inclusive learning, the multimedia room caters to all learning styles. It's where education meets innovation, preparing students for the future!



Explore, Experiment, and Discover in Our Science Composite Lab!



Our fully equipped Science Composite Lab provides students with hands-on experience in physics, chemistry, and biology. Designed to foster curiosity and critical thinking, the lab encourages experimentation and innovation. With modern equipment and safe learning environments, students can conduct experiments, observe scientific phenomena, and bring theoretical knowledge to life. It's a space where future scientists and innovators begin their journey!

SUMMER CAMP



Throughout the duration of the Summer Camp 2024, students enthusiastically engaged in a wide array of activities, ranging from fireless cooking sessions to honing their presentation skills by creating captivating PowerPoint presentations. Additionally, they delved into the world of martial arts, practicing the discipline and techniques of taekwondo under the guidance of experienced instructors.

Moreover, our budding artists unleashed their creativity and innovation in workshops where they transformed recycled materials into stunning works of art. From imaginative sculptures to intricate crafts, they demonstrated their talent and ingenuity, turning everyday objects into extraordinary masterpieces.

LEARNING WITH PURPOSE



Through a variety of subject lenses, students collectively explore and discover concepts, ideas, and even places during our learning adventures. They delve into geography, chemistry, global perspectives, and digital literature, gaining valuable insights along the way.

“Your education is the foundation; your career is the masterpiece”

Your Path to Growth and Success

Career Counselling

We provide career assessments, guidance on subject choices, study habits, and early career exploration. Our goal is to help students identify their strengths and interests to set a strong foundation for their future.



Social & Behavioural Counselling

Our counselling offers a safe space to address stress, anxiety, and relationship issues, helping you achieve emotional well-being and improve your life quality.

The school has given me many opportunities to express myself and gain confidence by allowing me to participate in extracurricular activities. Teachers not only help in gaining knowledge but also counsel us. I consider myself fortunate to be a part of Banyan Tree School.
ASHUTOSH BISHT, X B

It feels like a dream come true! It's not just about the grades; it's about self-discovery and support from my teachers and classmates. I was provided career counselling, and the teachers cultivated my critical thinking with engaging discussions and challenging projects, helping me excel.

BHUVI MEHTA, XII B (2023-24)

PARENTAL ENGAGEMENT

Highlighting the Value of Parental Involvement in School Community

Involvement in School Events

Encouraging parents to participate in various school activities to foster a sense of community. We invite parents to talk to our students in different capacities- career counselling, health awareness.

Regular Communication Channels

Banyan Tree School establishes open lines of communication for parents to stay informed.

Orientation

We provide essential insights and resources to foster a collaborative partnership between home and school, ensuring every child's success.

Parent-Teacher Meetings

Facilitating interactive discussions between parents and teachers to ensure student success.



ALUMNI MEET



The alumni meet takes place every year on the second Saturday of December year. Our distinguished alumni include senior IAS officers, renowned choreographers, and successful entrepreneurs.



OUR ACADEMIC TEAM



FAQs

What is the curriculum and board affiliation?

Banyan Tree School follows the curriculum prescribed by the Central Board of Secondary Education (CBSE). CBSE sets academic standards, conducts exams, and provides guidelines for schools to ensure quality education across the country.

How are assessments done?

Assessments at Banyan Tree School follow the guidelines set by the Central Board of Secondary Education (CBSE). They are conducted through a variety of methods including periodic tests, class assignments, projects, and examinations. CBSE emphasizes a comprehensive evaluation system that assesses students' understanding, application, and critical thinking skills across subjects, ensuring a holistic approach to learning and assessment.

What is the school's approach towards competition?

Banyan Tree School promotes a balanced approach to competition, emphasizing personal growth, collaboration, and sportsmanship. We encourage students to challenge themselves, set personal goals, and celebrate achievements, while fostering teamwork and mutual support. Our aim is to cultivate resilience, determination, and fair play, preparing students for success in academics and beyond.

What does inclusion mean to the school?

Inclusion at Banyan Tree School means valuing diversity, fostering belonging, and removing barriers to learning for all students, ensuring that every individual feels respected, supported, and empowered to thrive.

What is the approach to annual days, functions, and celebrations?

At Banyan Tree School, our approach to annual days and celebrations is about showcasing student talent, cultural diversity, and fostering community engagement through memorable events that celebrate achievement and creativity.

CONTACT US

Address:

Banyan Tree School
03, Lodhi Institutional Area
Lodhi Road
New Delhi-110003

Admissions Related Queries:

admissions@banyantree.in

School Contact Number :

0 731 462 1174, +91 011 40934390

Email us at:

info@banyantree.in

