

MIDDLE SCHOOL CURRICULUM AND PEDAGOGY



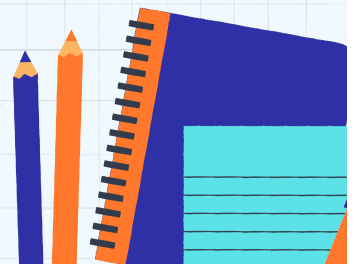
Middle school education is a pivotal stage in a student's academic journey, bridging the foundational concepts of elementary school with the specialized subjects of high school. The curriculum and pedagogy in middle school play a crucial role in shaping students' cognitive development, social skills, and academic readiness for higher education.

Curriculum Design

A middle school curriculum is designed to bridge the gap between elementary and high school education, fostering both academic and personal growth. It includes core subjects like mathematics, science, language arts, and social studies, alongside electives such as art, music, chess and physical education.

The curriculum lays emphasis on critical thinking, problem-solving, and developing strong study habits. The curriculum also introduces students to more complex concepts, encouraging exploration and a deeper understanding of various subjects. Additionally, social and emotional learning is integrated to support the developmental changes students experience during these formative years.

PEDAGOGY



Middle school pedagogy focuses on engaging students during a pivotal developmental stage, fostering both academic achievement and personal growth. A variety of instructional strategies are employed to address the diverse learning needs of students aged 11 to 14. This includes differentiated instruction, which tailors teaching methods and materials to

accommodate different learning styles and abilities, and cooperative learning, where students work in groups to enhance social skills and teamwork.

Project-based learning is another key approach, allowing students to explore real-world problems and develop critical thinking and problem-solving skills.

Technology integration is essential, with digital tools used to enhance learning and prepare students for the future.

Additionally, formative assessments guide instruction by providing continuous feedback, enabling teachers to adjust their strategies to improve student outcomes.

Middle school pedagogy also emphasizes the importance of a supportive and inclusive classroom environment, fostering a sense of belonging and encouraging positive social interactions. This holistic approach aims to develop well-rounded individuals ready for the challenges of high school and beyond.